

GUANGZHOU, CHINA

SUMMER 2026 - RESIDENTIAL AND DAY JUNIOR PROGRAMME

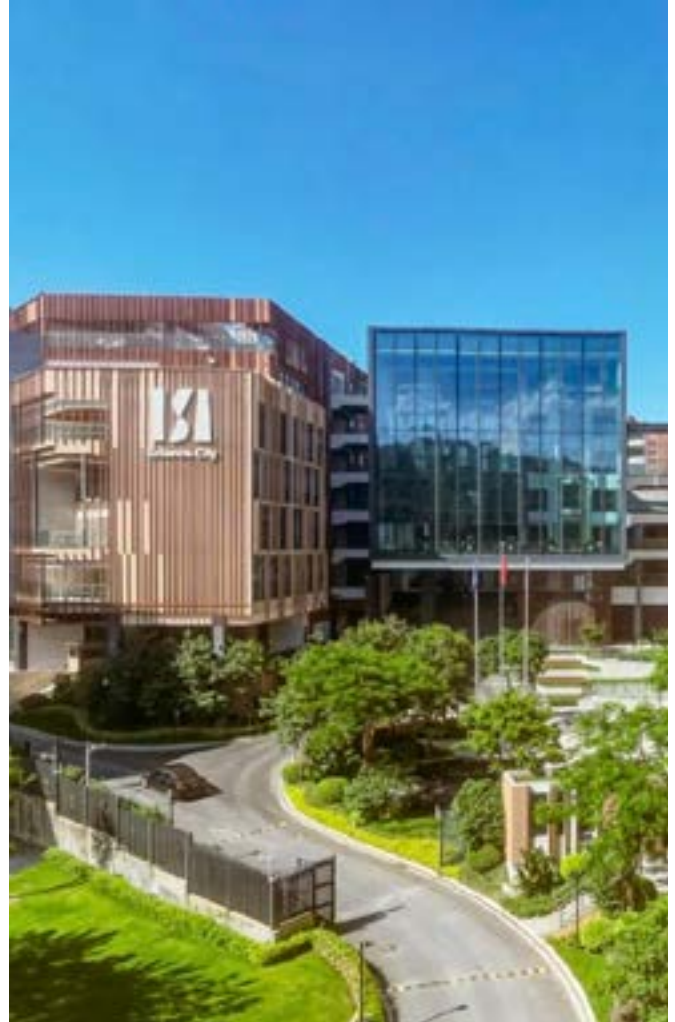
DATES	ARRIVAL	AGE
5th July - 2nd August	Sunday	7-12 / 13-17

An exciting English programme in Guangzhou, offering a British-style summer camp experience for young learners!

The Guangzhou camp is based at ISA Science City Campus in Guangzhou. Located in the heart of the Greater Bay area's innovation hub. The campus is renowned for its outstanding international environment and modern educational facilities.

ISA Science City features world-class teaching and activity facilities, including an Olympic-standard indoor heated swimming pool, a multi-purpose indoor sports hall, and a professional theatre. The school offers a great, safe environment for our students to enjoy our British Council accredited English and Stem summer camp.

We provide lunch for our day students. For residential students, the camp offers high-quality on-campus accommodation with 3 meals per day. Bedrooms accommodate a maximum of 4 students and the residence also includes well-designed communal spaces where students can relax, socialise, and build friendships after class.



WHAT'S INCLUDED

- English classes
- Placement test
- Educational materials
- End of course certificate
- Embassy Summer Signature British Experience activities
- 21st Century Skills activities
- STEM workshops
- Single-room accommodation for group leaders
- Three meals per day (day students are provided with lunch only)
- Excursions and educational visits arranged as part of the programme itinerary

RESIDENCE	ISA SCIENCE CITY CAMPUS, GUANGZHOU
Room set up	4-bed rooms
What's in a room	Comfortable beds, desks, chairs, storage space, and air conditioning
Distance to classes	On campus
Accommodation Deposit	Students are required to pay an accommodation deposit of RMB 300 upon arrival. The deposit will be refunded at the end of the camp in accordance with regulations, provided that no facilities or items have been damaged.
Camp Facilities	The camp features modern classrooms and STEM innovation labs, as well as a professional theatre, an Olympic-standard heated swimming pool, a multi-purpose indoor sports hall, and spacious outdoor activity areas. Together, these facilities provide an excellent environment for scientific exploration, artistic expression, and sports activities. The camp operates under 24-hour closed-campus security management to ensure students' safety throughout their stay.

PROGRAMME HIGHLIGHTS

Built on Embassy Summer's global camp standards, this programme follows a well-established curriculum and activity framework while drawing on Guangzhou's strengths as a technology and innovation hub in the Greater Bay Area. This gives the camp a distinctive local focus on technology exploration.

Classes are delivered by a professional team of international teachers. Through interactive lessons, themed experiments, and daily communication, students develop their English skills in an immersive environment. The programme promotes communication, collaboration, creativity, and critical thinking, helping students build key 21st-century skills as they solve problems and work through challenges.

The Guangzhou programme is centred on the theme of "Technology and Innovation." By combining educational visits with STEM-based classroom activities, students experience the impact of cutting-edge technology and modern development.

Gross price per student, 7 nights	RMB 10,680
Gross price per student, 7-day programme	RMB 8,980
One way individual transfer*	TBC
Additional Group Leader	TBC



*Group transfer rates available on request.

14-DAY RESIDENTIAL PROGRAMME

	MORNING	AFTERNOON		EVENING
DAY 1	Student Arrivals Camp Induction, health and safety briefing, summer camp rules and regulations Programme Overview			Welcome Games
DAY 2	English language testing & classes	The great British Bake-Off	Sports and games, team building activities	British Quiz Night - All About London
DAY 3	English language classes	STEM Activity	Communication and Collaboration Challenges	Board Games Evening
DAY 4	English language classes	Educational visit to the Guangdong Science Center		Developing Critical Thinking with the Great Egg Drop
DAY 5	English language classes	A Royal Arts & Crafts Afternoon - A creative afternoon exploring the British Royal Family and making castles, crowns and tiaras!		Traditional British Children's Party Games
DAY 6	English language classes	STEM Activity Afternoon (workshop and hands on STEM activities)		Arts & Crafts Activities
DAY 7	Full day trip to Nansha IT Park			Dance Party Night
DAY 8	On site creativity day OR Optional full day trip to Chimelong Paradise			Guangzhou's Got Talent Evening
DAY 9	English language classes	Traditional British Sports Day		Exploring creativity with the Trashion Show
DAY 10	English language classes	Arts & Crafts Activities	STEM Activity	British Etiquette Evening
DAY 11	English language classes	Educational visit to the Guangdong Museum		British Quiz Night - All About The Royal Family and the Royal Palaces in the UK
DAY 12	English language classes	STEM Activity Afternoon (workshop and hands on STEM activities)		Board Games Evening
DAY 13	English language classes	Graduation Day and Award Ceremony		Movie Night - Madagascar
DAY 14	Full day trip to Chimelong Safari Park			Arts & Crafts Activity
DAY 15	Student Departures			