

English Language Camps

Spanish Language Camps

Young Professionals

The Olympiad

University Preparation

Ministays

More than just an  
English language  
summer school

# Welcome to Embassy Summer 2026

Dear Students, Parents, and Partners,

It is with great pleasure that I welcome you to our Embassy Summer 2026 brochure!

At Embassy Summer, we believe that learning goes far beyond the classroom. Every year, we proudly deliver experiences that ensure our students leave us with memories to last a lifetime. Our students grow academically, develop life skills, and have the opportunity to explore exciting cities around the world. As importantly, when taking part in one of our many international programmes, our students get to meet other young people from all over the world, helping them to expand their horizons even further!

2026 is set to be one of our most exciting years yet. We are thrilled to be expanding our offering in response to the growing needs and interests of our global community.

This year we are launching our **new Spanish language camps in Valencia and Madrid** – ideal for students looking to improve their Spanish language and broaden their cultural horizons in a traditional Spanish setting, while enjoying the same Embassy Summer experience they know and love.

We are expanding our year round programmes and introducing **new locations in New York and Montreal**, giving students more opportunities than ever to study in dynamic, English-speaking environments beyond the summer months.



Lisa James  
**Managing Director,  
EC Young Learners**

With a significant increase in more advanced English language learners, we have developed **new academic materials tailored for C1/C2 level students**, designed to challenge and inspire them, with less of a focus on English language and more of a focus on using the language they have in a more real-life setting.

Additionally we are launching our brand-new **Young Professionals programme**, a dynamic course that introduces students to the fundamentals of business, leadership, and innovation in a fun, practical way.

Following their success in 2025, we are delighted to be offering our **Olympiad and University Preparation courses** once again. These specialised programmes provide ambitious students with the tools, knowledge, and confidence to excel in competitive academic environments and take their first steps toward higher education.

At the heart of everything we do is **a commitment to creating a safe, inclusive, and enriching environment where students can thrive**. Whether they are joining us for the first time or returning for another fabulous experience, our students leave with improved skills, a deeper global awareness, and memories to last a lifetime.

Thank you for choosing Embassy Summer. We can't wait to welcome you!

Embassy Summer is accredited by



Welcome to Embassy Summer 2026	2
Why Choose Embassy Summer?	4
Keeping the Students Safe	6
Learning Inside & Outside the Classroom	7
Our Vision	11
A World of Choice	12
Spanish Language Camps	16
Non Language Focussed Programmes	28
The Olympiad	24
University Preparation Programme	26
Young Professionals	28
Year-Round Mini Stays	30
Summer Locations	40



# Why Choose Embassy Summer?

## Nationality Mix

Embassy Summer has one of the industry's leading nationality mixes, with no one dominant nationality and students from all over the globe in our classes. This is one of our key selling points and we are very proud of it!



## Locations

Embassy Summer has a diverse portfolio, offering locations throughout the year operating in 8 countries across 4 continents.

## Experience

Highly experienced and dedicated staff across the whole business, from the head office to the centres.

## Award-winning

Embassy Summer continues to win awards from numerous recognised bodies including the Eurasia Awards, ST Star Awards & BETA. We are proud of these awards that recognise the hard work our teams put in to making the student experience a special one.

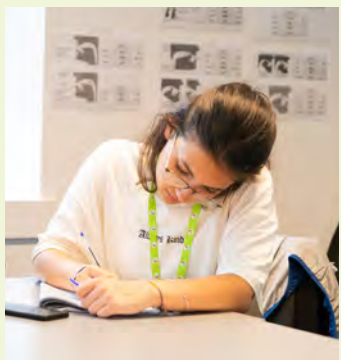
## Happy Students

We are experienced at delivering outstanding programmes, with an average student satisfaction rate of 99%, based on student feedback.

Embassy Summer provides an environment where you can grow, connect, and create lasting memories. I'm so grateful for the experience!

”

Hussain Ali Sindhu  
Activity Leader 2025





## Keeping the Students Safe

### Experienced Head Office Team

- Student safety and wellbeing is our first priority.
- All of our staff are required to complete Safeguarding Level 1 provided by the British Council. All of our centre management team are trained to Level 2 standards.
- Each centre has at least one dedicated Welfare Officer who's sole responsibility is ensuring our students' wellbeing.

### We care 24/7

- We provide supervision after class & activities and during excursions.
- We have dedicated night supervisors in our centres to make sure we provide 24-hour support to our students.
- If any medical issues arise we have access to first aiders on-site for basic support, and, if required, our staff have established links with local doctors, dentists and hospitals.

### Nurturing and Homely Environment

- We provide guardians to ensure that individual students are having a fun and safe experience in our centres.
- All of our residences have staff staying in the accommodation to provide a nurturing and safer environment.

### Dedicated Support

- Dedicated support provided for our students throughout their stay.
- Full induction and orientation given on arrival.
- All students are issued with identity cards containing our emergency telephone details.

We place the highest priority on the welfare and safety of our students and provide a high standard of care and supervision across all of our programmes and in all of our global destinations.



The World Travel & Tourism Council (WTTC) SafeTravels stamp enables students to recognise schools around the world which have adopted health and hygiene global standardised protocols – so they can experience 'Safe Travels'.

## Learning Inside & Outside the Classroom



Our B2/C1 level students can benefit from more advanced academic materials in select centres in the United Kingdom!

Learn more about our Young Professionals programme on page 22

### Our Teaching Methodology

At Embassy Summer, we follow a “Task – Teach – Task” approach grounded in current research into how languages are learnt. Rather than simply placing students in CEFR-level classes to study pre-set grammar points, we focus on age-appropriate grouping and designing lessons that get students actively using English. Each lesson begins with a communicative task that encourages students to speak, collaborate, and draw on their existing language. Teachers then respond to the emerging language from the group — identifying strengths, gaps, and opportunities to upgrade what students produce — before guiding them through a second, more refined version of the task. This ensures that language learning is personalised, practical, and genuinely communicative, helping students grow in confidence and fluency in a way that reflects how languages are used in the real world — not just how they're tested.



### Immersion in an English - Speaking environment

- We cater for students of all levels, from beginner to advanced.
- Full immersive experiences provided in an English-speaking environment.

### Students - centered Lessons

- Students are placed in classes with a good nationality mix wherever possible.
- Students are encouraged to use the language to share opinions and discuss relevant topics.
- Teachers are trained and supported to run student-centred lessons which are fun & engaging.
- Teachers provide continuous valuable feedback to students to help them improve their level of spoken language and to give them added confidence and higher proficiency.

### Real Conversations

- All students take an English language level test before starting their classes.
- Typical Embassy Summer lessons start with a speaking activity, allowing students to express their opinions.
- Students might be asked to compare things or recommend something, ask for opinions, summarise a text or solve a problem.
- Teachers might pre-teach some functional phrases or highlight them during a feedback stage; the focus is to provide a platform for real conversation on engaging topics and for the teacher to help them to improve.
- All of our teachers receive training before they start and are supported by our academic team throughout the summer, enabling them to deliver practical lessons with clear learning outcomes that improve students' level of communication.





At Embassy Summer, we see language as a skill; less of a dry academic subject where the teacher explains structures and students complete exercises, and more of an opportunity to improve confidence in communicating and to practise speaking.

### Our Language Programme

Bespoke lesson materials, the Embassy lesson is designed to engage students in discussion, to develop the key life skills of collaboration and intercultural communication, and to provide extensive opportunities to practice and build on current language.

- Lessons taught by teachers trained to deliver the Embassy Lessons.
- 17 students per class and classes suitable for students of all levels.
- 15 hours a week
  - 20 x 45 mins in the UK & USA
  - 15 x 60 mins in Malta and Spain
- All learning resources provided are age appropriate.
- All students receive an end of course certificate of attendance.



## A Good Night's Sleep

With so much to do during the daytime it is important that all of our students get a good night's sleep. Embassy Summer offers a wide range of residential options, all of which are risk assessed to ensure the ultimate safety for our students.

- Our centres offer residential accommodations on college campuses or in boarding schools. In some locations we also use a few carefully selected hotels.
- Our residences come in all shapes and sizes. The majority of our residences offer single en suite options, but we also have locations with twin, triple and quad rooms, some with en suite bathrooms, some with shared bathrooms.
- Students can relax in shared common spaces.
- Host family options are available at some centres, with providers being regularly checked by Embassy Summer staff.
- Experienced Homestay providers, residential guardians for individual students, residential staff, and night supervisors ensure our students' safety.
- All of our accommodation is cleaned regularly, with linen provided.
- We recommend that students bring their own towels, although some centres provide them. See individual centre pages for more information.
- All centres offer full board accommodations with balanced meals catering to most dietary requirements, ensuring students stay healthy, focused, and energised.



## Out & About

- A key part of our summer school experience is exploring local towns, cities, and famous attractions with new friends.
- Two-thirds of the experience is spent outside the classroom, so we tailor our programs to maximise the student adventure.
- Excursions and activities are as important as English classes, all programmes include full-day and half-day excursions, with optional trips for further exploration. Visit our centre pages for specific details.
- When not on excursions, students enjoy a wide range of activities, varying by location, including:
  - sports
  - discos
  - beach barbecues
  - cultural quizzes
  - and many more.
- Our activity programme ensures students meet peers from around the world, practice English and stay healthy, happy and engaged.



## Our Vision

# Helping students succeed in a global community.



## Our Mission

We are inspiring people. As a team, a family, we inspire our students, our partners and each other every day.

We empower, share knowledge and create success. We dream big for ourselves and our students.

From a single school, to a global chain, to a leader in global education, our beliefs have never changed.

We believe in people and their limitless potential. We celebrate and nurture achievement and embrace every challenge along the way.

With a positive mindset, we innovate and keep moving forward. When we stumble, we pick ourselves up, re-focus and create a new path.

Everyone we meet on this amazing journey helps to shape who we are. These connections will also shape who you are, now and into the future.

**This is our mission.**





# A World of Choice



# A World of Choice

CENTRE	LOCATION	SIZE	ACCOMMODATION	AGE	DATES	SEASON
UK						
Wellington College	Berkshire	Medium	Single, twin, triple or quad standard rooms	10-17	30/06/26 - 11/08/26	Spring & Summer
EC Brighton	Brighton	Small	Homestay single Room	13-17	15/09/25 - 17/05/25	Autumn, Winter & Spring
University of Sussex	Brighton	Large	Single en-suite rooms	13-17 Individuals 12-18 as part of group	30/06/26 - 18/08/26	Summer
EC Bristol	Bristol	Small	Homestay twin room	13-17	15/09/25 - 17/05/26	Autumn, Winter & Spring
Abbey College	Cambridge	Medium	Single en-suite rooms	12-18	28/06/26 - 16/08/26	Summer
University of Kent	Canterbury	Medium	Single en-suite or standard rooms	12-18	23/06/26 - 18/08/26	Summer
Chessington World of Adventures Resort	Greater London	Small	Triple en-suite rooms	8-18	05/01/26 - 09/03/26	Winter
Royal Holloway, University of London	Egham	Medium	Single en-suite rooms	10-18	23/06/26 - 18/08/26	Summer
University of East London	London, Docklands	Large	Single en-suite rooms	11-18	16/06/26 - 18/08/26	Summer
Queen Mary, University of London	London, Mile End	Large	Single en-suite rooms	12-18	23/06/26 - 18/08/26	Summer
London South Bank University	London, South Bank	Large	Single en-suite rooms	13-17 18-21	21/06/26 - 16/08/26	Summer
University College London	London, Stratford	Medium	Single en-suite rooms	12-18	28/06/26 - 18/08/26	Summer
Oxford Brookes University	Oxford	Medium	Single en-suite or standard rooms	13-17 Individuals 12-18 as part of group	28/06/26 - 18/08/26	Summer
University of Newcastle	Newcastle Upon Tyne	Medium	Single en-suite rooms	12-18	30/06/26 - 11/08/26	Summer
IRELAND						
EC Dublin	Dublin	Small	Homestay	13-17	14/09/25 - 16/05/26	Autumn, Winter & Spring

CENTRE	LOCATION	SIZE	ACCOMMODATION	AGE	DATES	SEASON
SPAIN						
MiCampus Madrid	Madrid	Small	Twin or triple en-suite	11-17	01/07/26 - 29/07/26	Summer
MiCampus Valencia	Valencia	Small	Twin or triple en-suite	11-17	01/07/26 - 29/07/26	Summer
MALTA						
Campus Hub	Malta	Large	Single, twin, triple or quad standard rooms	12-17	21/06/26 - 16/08/26	All year
Homestay	Malta	Large	Homestay triple or quad rooms	13-17	21/06/26 - 23/08/26	All year
Hotel Stay	Malta	Large	Triple or quad en-suite rooms	12-17	28/06/26 - 26/07/26	Autumn, Winter & Spring
Mediterranean College of sports	Malta	Small	Twin, triple or quad standard rooms	12-17	28/06/26 - 23/08/26	All year
SOUTH AFRICA						
EC Cape Town	Cape Town	Medium	Hotel twin en-suite rooms	12-18*	28/06/26 - 02/08/26	Summer
UAE						
EC Dubai	Dubai	Medium	Twin en-suite rooms	12-18*	On request	All year
USA						
Tufts University	Boston	Medium	Twin standard rooms	13-18	28/06/26 - 02/08/26	Summer
CANADA						
EC Montreal	Montreal	Small	Homestay Single Room	13-17	14/09/25 - 16/05/26	Autumn, Winter & Spring



# Spanish Language Camps



We are delighted to officially launch our Spanish language summer schools and expand our passion in language teaching to Spain! The same great product in an exciting new language.

## Madrid

Vibrant city life, rich in culture, in the capital of Spain. Madrid has something for everyone!

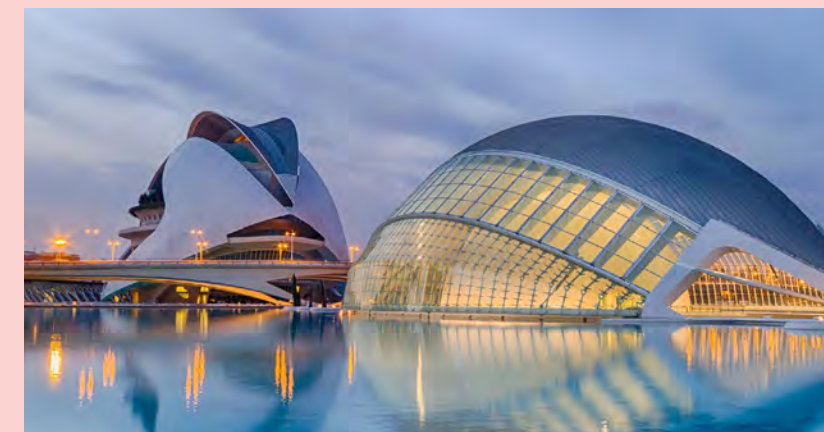


# 20



## Valencia

Mediterranean vibes, great food and endless beaches. Come see what Valencia has to offer!





Madrid



Spain

Beautiful architecture, world-class museums, exciting excursions and, some say, the purest form of Spanish! The excellent public transport system ensures you can visit all the diverse neighborhoods, perfectly maintained parks and really live the Spanish lifestyle in the heart of the capital.

**Date**  
01/07/26 - 29/07/26

**Age**  
11–18 (18 year olds accepted as part of a group with a leader)

- Accommodation**
- Twin and triple en-suite rooms
  - Hotel style residence with each room individual
  - XL single beds, wardrobe, desk and chair

- Cleaning**
- Rooms cleaned weekly
  - Social spaces cleaned daily
  - Laundry available on-site for a small fee
  - Bed linens and towels supplied



Part of a student residence complex in tranquil north Madrid, the residence boasts a swimming pool, podcast studio and top of the range canteen with chefs. The Metro is in the doorstep and will take you to all the many exciting things to see and do in the Spanish capital!



The sample programme is provided for illustrative purposes only and is subject to change.

	Morning	Afternoon	Evening
SUN	Arrivals	Check-In	Welcome Games
MON	Lessons	Explora Madrid - Walking Tour	Madrid Photo Challenge
TUE	Lessons	Casa de Campo Lake	Cinema Under the Stars
WED	Lessons	Visit Templo de Debod	Treasure Hunt in the park
THUR	Lessons	Museo Nacional del Prado	Theatrical Improv
FRI	Lessons	Madrid Río Beach	Spanish Fiesta
SAT	Full Day Trip: Segovia		Karaoke Night



Valencia



Spain

Mediterranean summer vibes in the home of Paella! Valencia is a city that has something for everyone, be that days at the beach playing volleyball, exploring the 7th century old town or swimming in the sea.

**Date**  
01/07/26 - 29/07/26

**Age**  
11–18 (18 year olds accepted as part of a group with a leader)

- Accommodation**
- Twin and triple en-suite rooms
  - Hotel style residence with each room individual
  - XL single beds, wardrobe, desk and chair

- Cleaning**
- Rooms cleaned weekly
  - Social spaces cleaned daily
  - Laundry available on-site for a small fee
  - Bed linens and towels supplied



A fantastic, purpose built for students, residence in a safe and traditional Valencia neighbourhood. Close to the city centre and a short tram ride to the beach, our Valencia summer school is the perfect place to learn Spanish!



The sample programme is provided for illustrative purposes only and is subject to change.

	Morning	Afternoon	Evening
SUN	Arrivals	Check-In	Welcome Games
MON	Lessons	Valencia Explora - Walking Tour	Photo Challenge
TUE	Lessons	Beach & Volleyball	Paella Cooking Course
WED	Lessons	Ciudad de las Artes y las Ciencias	Jardines del Turia Treasure Hunt
THUR	Lessons	Graffiti Workshop - Barrio del Carmen	Theatrical Improv
FRI	Lessons	Mercado de Colon - Tapas Edition	Spanish Fiesta
SAT	Beach Day - La Malvarrosa		Karaoke Night



# Non Language Focussed Programmes

We go beyond teaching English as a Foreign Language.

For students who already have a good level (B2+) of English, or do not need to improve their Spanish, we offer a number of programmes focussed on non language skills including 21st century skills, university entry, leadership and business. These specialised programmes offer immersive, goal-driven experiences that prepare learners for the future, both inside and beyond the classroom.



## Olympiad

Our Olympiad programme offers school groups a unique opportunity to compete alongside other schools from around the world in a unique competition focussed on the 4 C's; communication, creativity, collaboration and critical thinking. This programme sets students up for future success.



## University prep

This programme is ideal for students wanting to learn more about UK universities, how they operate, what they look for in applicants to their undergraduate courses. We provide insights into the application process and real-life campus tours.



## Young Professionals

This specialised course offers ambitious teens a taste of MBA-style learning through interactive tech, projects, and traditional methods—providing insight into a top professional qualification followed by many CEOs. Inspiring and well-rounded, the Young Professionals course is designed to spark curiosity and passion for future success.





# The Olympiad

Wellington College



**Date** 29/03/26 - 12/04/26

**Level** B1+

**Age** 11 - 17

**Bathroom Ratio** 1:5 students

**Room set up** Boarding houses - single, twin, triple, quad rooms & shared bathrooms. Each house has its own common room, kitchen area and study space

**What's in a room** Single bed, wardrobe, desk, chair

**Common room** Yes

**Cleaning** Rooms and communal areas are cleaned daily

**Linen cleaning** Changed fortnightly

**Towels** Students bring their own towels

**Laundry** Available in residence

**Meals** Served in the traditional and historic dining hall

**Wi-Fi** Yes

**Distance to classes** On campus

**Damage** Deposit of £30 is required upon arrival

**Facilities** Extensive outside space for sports including football, cricket, rugby etc, Multiple activity rooms, including an art room, Hard courts for tennis, Indoor swimming pool, Two large modern sports halls

**The programme has a duration of 12 or 14 nights and applies to groups of 15 students minimum.**

### Historic and traditional, a truly British experience.

This famous and prestigious boarding school provides a world leading educational environment, a wealth of firstclass facilities, all set on an inspirational campus. Wellington College is one of the world's top independent boarding schools, winning 'Independent Boarding School of the Year' in the TES independent school awards. The school is set in 400 acres of beautiful parkland in the county of Berkshire, only one hour from central London and just 40 minutes from Heathrow Airport.

The school offers outstanding facilities, including an indoor swimming pool, extensive playing fields for a variety of sports and two state of the art sports halls. There is an onsite café, lots of space to relax and a brand new theatre, all on a safe and secure campus.



### What's included

- Preparation modules for the Olympiad Competition
- All Olympiad Competition Challenges
- Educational materials where applicable
- Olympiad Certificate of Participation & Olympiad Award Ceremony
- Accommodation on campus in single, twin, triple, quad shared bathrooms 1:5 students
- Single and twin rooms for group leaders
- Full board meal plan
- Activities as per sample programme
- 1 free group leader with every 15 paying students

### Sample Programme

The sample programme is provided for illustrative purposes only and is subject to change.

	Day 1	Day 2	Day 3	Day 4	Day 5	Day 6	Day 7
Morning	Arrivals, welcome and induction Campus orientation, safety rules and regulations	English language testing & induction lesson An introduction to the 4 C's and the World Economic Forum skills for the future plus rules and process for the Olympiad competition	Communication Learning Module	Critical Thinking Learning Module	Communication Challenge - Objective Obstacle!	Critical Thinking - Timed Team Challenges	Full Day Trip: London with Westminster Walking Tour and Covent Garden
Afternoon		Critical Thinking Learning Module	Collaboration Learning Module	Creativity Learning Module	Collaboration Challenge - Orienteering	Communication Learning Module	
Evening	Welcome Team Games	Critical Thinking - Escape Rooms	Communication - Photo Scavenger Hunt	Collaboration Challenge - Nightline	Collaboration Activity - Team Games	Talent Show (prepared before arrival)	Disco Night

### What is the Olympiad?

Our Olympiad programme offers school groups a unique opportunity to compete alongside other schools from around the world in a competition filled with fun challenges based on the 4 'C's' identified as essential for 21st century learning and, ultimately, student success.

The Olympiad is a positive way for students to learn more about these key skills and compete in exciting and fun challenges that are scored through our bespoke points based system.

### What are the 4 'C's'?

Communication, Collaboration, Critical Thinking and Creativity. Students need these specific skills in order to enhance ways of thinking, learning, working and living in the world, helping them to prepare for their future success.

### Why are the 4C's and the 21st century skills important?

For many years young people have been measured on their high school grades but now the bar for our young people is on university, career and real-world success. Both university and business leaders point to soft skills as being the key driver for success, either in education or in the workplace.

With the advancement of technology in recent years we are now having to prepare students for jobs that may not yet exist and we have to equip our young people with skills to help them prepare for the unknown!

Social media and access to huge amounts of data on the internet for example has provided students with a new set of challenges and they need new skills to navigate these challenges. Our Olympiad programme focuses on these skills.

### Sample learning modules

#### Collaboration

Our collaboration learning modules help students to develop a wider knowledge on the importance of collaboration, whether amongst their peers or on a global stage, as well as an understanding on the relevant theories of collaboration. We look at how we can develop best practice methods for inclusive collaborative practice and how working collaboratively can lead to a more socially fair society.

#### Critical thinking

Students will learn about the principles of critical thinking including innovative problem solving methods. They will develop understanding of the importance of data analysis and analyzing facts to brainstorming in teams to solve problems. Left and right brain thinking and helping them to make better decisions.

#### Communication

We learn about the barriers to good communication and teach skills on how to interact with others effectively and skillfully. We look at active listening and dive deeper in to the communication skills required to counsel, persuade, elaborate and describe, as well as look at non verbal communication clues.

#### Creativity

This learning module is designed to develop a deeper understanding of the importance of creativity and innovation. We will look at the characteristics of creative thinkers and how we can develop confidence in our students to be more creative and innovative and what the blockers to their own creativity may be. This is a fun module that will also push people outside of their comfort zone as they begin to push through their own blockers and begin to innovate!

### Do schools need to prepare before they travel?

Schools will not need to prepare before they travel, part of the programme will support them in their preparation and provide them with time to get ready for the Olympiad challenges. Please note that there is a talent show at the end of the first week.

Schools are encouraged to prepare something ahead for this part of the programme only.

Teams will be multi-school, meaning participants will be mixed with students from other schools while competing, encouraging further collaboration and team work.

The Olympiad is ultimately a fun learning experience and we want all participants to go home having had an enjoyable time with us!



### Food options & facilities

#### Breakfast

Full English Breakfast provided

#### Lunch

2 course meal offering 3 options including a variety of salads and fresh fruit

#### Dinner

2 course meal offering 3 options

#### Snacks

There is a café on the premises should students wish to buy drinks and snacks.



# University Preparation Programme

Brighton or Greater London



**Date** On request

**Level** B2+

**Age** 14 - 18

This programme can run either through one of our Homestay providers in Brighton or else in residence in Greater London.

Facilities and room set up vary depending on destination.

**Wi-Fi** Yes

**Damage** Deposit of £30 is required upon arrival

**The programme has a duration of one or two weeks and applies to groups of 15 students minimum.**

Our university preparation programme has been designed for students who are interested in students considering studying at degree level in a British university. Delivered by Embassy StudyTours, the academic sessions are led by university graduates who understand the realities of higher education. Students will:

- Gain insights into subject options and academic expectations
- Learn how university applications are assessed
- Build skills that support lifelong learning and adaptability
- Visit some of the UK’s most popular university campuses



### What’s included

- General English lessons (12 hours) per week
- Placement test
- University study skills and application workshops
- Certificate of Participation
- Visits to universities
- Accommodation
- Full board meal plan
- Excursions & Activities as per sample programme
- 1 free group leader with every 15 paying students

### Sample Programme

The sample programme is provided for illustrative purposes only and is subject to change.

	Day 1	Day 2	Day 3	Day 4	Day 5	Day 6	Day 7
Morning	Arrivals  Welcome & Induction  Campus Orientation	English language testing & lessons	Lessons	Full Day Trip: Oxford with Walking Tour, University College Visit & Shopping	Lessons	Lessons	Full Day Trip: London with Westminster Walking Tour and Covent Garden
Afternoon		Visit to The University of Sussex, campus tour and meeting with university staf	University Study Skills: Creative writing workshop  Understanding UK university rankings, how to choose a course		Visit to UCL East, campus tour and talk on life at UCL	University Application Workshop - Understanding the road to Oxbridge or the Ivy League	
Evening	Welcome Team Games	Movie Night	Photo Scavenger Hunt	Sports Evening	University Challenge Quiz Night	Graduation Evening	Sports Evening

### Food options & facilities

Residence:

#### Breakfast

Full English Breakfast provided

#### Lunch

2 course meal offering 3 options including a variety of salads and fresh fruit

#### Dinner

2 course meal offering 3 options

Homestay:

Meals are provided by host families. Special dietary requirements may be accommodated subject to availability at a fee





# Young Professionals

## Brighton or Cambridge



### Dates

Brighton: 30/06/26 - 18/08/26  
Cambridge: 28/06/26 - 16/08/26

**Level** B2+

**Age** 13 - 17

**Bathroom Ratio** 1:1 students

**Room set up** Single en-suite

**What's in a room** Single bed, wardrobe, desk, chair

**Common room** Yes

**Cleaning** Rooms and communal areas are cleaned weekly

**Linen cleaning** Changed fortnightly

**Towels** Students bring their own towels

**Laundry** Available in residence

**Wi-Fi** Yes

**Distance to classes** On campus in Brighton, 5 minute walk in Cambridge

**Damage** Deposit of £30 is required upon arrival

**This specialised course allows students to study a variety of MBA style modules, providing a taster experience and insight in to one of the world's most recognised and sought after professional qualifications, and one that most CEO's would have followed on their way to success!**

Using traditional teaching methods, interactive technology and project based learning, students can enjoy a well rounded and inspiring curriculum. Designed with the ambitious teenager in mind, our **Young Professionals** course is guaranteed to excite, delight and ignite passion.



### Key Facts:

- Age 13-17 years
- B2+ minimum English language level required
- Minimum one week programme
- 15 hours of MBA style taster modules per week
- Weekly critical thinking workshop
- Embassy Summer Young Professionals certificate and end of course report
- Afternoon and evening activities
- Excursions and visits

### Sample Programme (Brighton)

The sample programme is provided for illustrative purposes only and is subject to change.

	Day 1	Day 2	Day 3	Day 4	Day 5	Day 6	Day 7
Morning	Arrivals/ Departures  On-site Activities	Leadership Plus  Innovation & creativity in organisations	Accounting & financial management  Marketing & brand development	Entrepreneurship and new venture creation  Project management	Strategic thinking  Leadership Plus	Project Management  Entrepreneurship & New Venture Creation	Full day trip: London with Westminster walking tour and National Gallery visit
Afternoon	Optional trip to Portsmouth Historic Dockyards	Half day trip: Brighton with walking tour	Half day trip: Arundel Castle	On-Site Sports	Critical Thinking Workshop	Capture the Flag  Drama  Optional Trip to Brighton i360	
Evening	Welcome Team Games	Karaoke  Optional Cinema/Bowling	Photo Scavenger Hunt  Brighton Bingo	Trash fashion show	Nature Walk Lip dub Presentation	Disco Kahoot Quiz	Film Night

### Sample Modules:

Our **Young Professionals** course offers students the opportunity to explore a number of different topics that you would both find on a traditional MBA style programme but that are equally indispensable for our future leaders. As this is a short term programme the modules are tasters introduced across a 15 hour curriculum per week. We recommend that students take full two week programme to fully benefit from the course.

#### Innovation and creativity in organisations

Provides students with a critical understanding of the challenges of managing creativity and innovation within contemporary organisations and the ever-changing global competition.

#### Leadership Plus

Critical to every business, students focus on talent management and decision-making, and leading and developing individuals and high performance teams within an organisational culture.

#### Accounting & financial management

An introduction to financial statements and a basic understanding of business accounting. Students look at the economics behind businesses and how basic business budgets work

#### Strategic Thinking

This module outlines what strategic thinking is, how strategies are developed and evolve, what various business models look like and how innovative and successful strategic business plans are put together

#### Entrepreneurship and New Venture Creation

Allows students to explore the variety of factors which influence decision making in business, with focus on: business start-up, creativity and innovation, risk management, and conflict resolution

#### Project Management

Students learn to plan a project, identifying and measuring the requirements and the relationship between time and cost, risk management of same, and putting a project plan into action

#### Marketing & Brand Development

Students learn the basic skills needed for a broad understanding of the marketing environment, the fundamentals of management, and the professional and academic skills needed for business

### Weekly Critical Thinking Workshop

Identified by the World Economic Forum as one of the most important skills required by our young generation for future success, our Young Professionals course includes one full afternoon workshop per week aimed to improve the students' critical thinking. Developed by an expert team, these workshops are a fantastic addition to this programme.





# Year-Round Mini Stays

Embassy Summer also provides personalised, bespoke mini stay programmes for junior groups all year long. This can be anything from additional trips and excursions outside of the classroom to specialised classes.

**Groups throughout the year from around the world can create their perfect study trip – learning whilst having an adventure!**



32

**Malta**  
Campus Hub  
Homestay  
Mediterranean College of Sport  
Hotel Options



34

**UK & Ireland**  
Bristol  
Brighton  
Chessington World of Adventures Resort  
Dublin



36

**USA & Canada**  
Montreal  
New York



38

**UAE**  
Dubai



## Language courses

Classrooms are modern, comfortable and equipped with the latest learning technology. Our teachers plan interesting lessons and there is free Wi-Fi in every centre. Customised courses are available on request.

## Accommodation

A variety of options are available to meet the needs and budget of your group. They are conveniently located so that you can travel easily to school and enjoy a erschool activities.

## Activity programme

A range of activities and excursions are available in each location to match the interests of the group. Our experienced team can easily accommodate your needs.

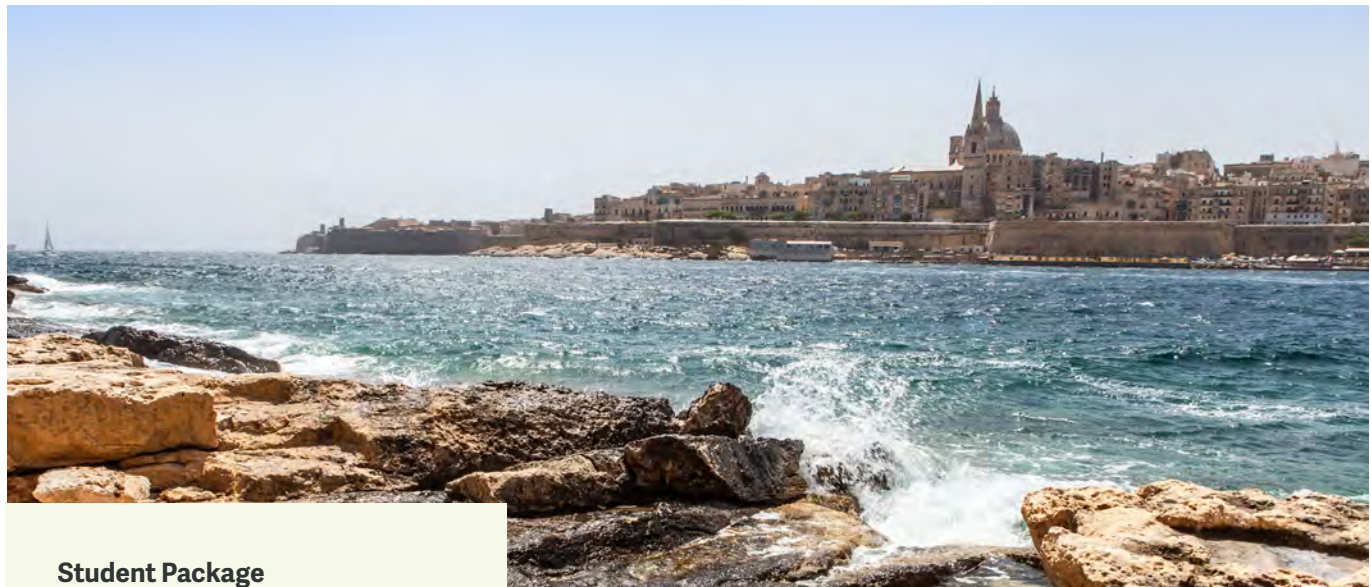
## Excellent service

Expect a full service for your low season groups. Sales managers work with you to create a customised programme and our admissions and operational teams provide the logistic support to ensure a happy and successful group experience.



Scan our QR code to learn more





**Student Package**

- Full-board accommodation including packed lunches
- General English (20 lessons / 15 hours per week) - Closed Group
- Education materials
- End of Course Certificate
- Airport transfers arrival & departure

**Leader Package**

- Single room, full board including packed lunches
- Airport transfers arrival & departure

**Accommodation Type**

Homestay or Residential



- Lessons alternate between morning and afternoon sessions.
- Special dietary requirements may be accommodated subject to availability at a fee of €35 per week.
- Daily school bus transport



**Campus Hub**

**Mimumum age**  
13 years

**Availability**  
From 14.09.25 to 16.05.26

**Arrival** on Sunday  
**Departure** on Saturday

Lessons alternate between morning and afternoon sessions.

**Accommodation**  
Residence

**Most Popuar Activities**

- Valletta
- Mdina
- Gnejna Bay
- Comino
- 3 Cities Harbour Cruise



**Homestay**

**Mimumum age**  
13 years

**Availability**  
From 14.09.25 to 16.05.26

**Arrival** on Sunday  
**Departure** on Saturday

Lessons alternate between morning and afternoon sessions.

**Accommodation**  
Host Family

**Most Popuar Activities**

- Valletta
- Limestone Heritage
- Gozo
- Water Park
- Ghajn Tuffieha



**Mediterranean College of Sport**

**Mimumum age**  
13 years

**Availability**  
From 14.09.25 to 16.05.26

**Arrival** on Sunday  
**Departure** on Saturday

Lessons alternate between morning and afternoon sessions.

**Accommodation**  
Residence

**Most Popuar Activities**

- Esplora
- Mdina
- UNO Party
- Comino
- Ghadira Night



**Hotel Options**

**Mimumum age**  
13 years

**Availability**  
From 14.09.25 to 16.05.26

**Arrival** on Sunday  
**Departure** on Saturday

Lessons alternate between morning and afternoon sessions.

**Accommodation**  
Bella Vista or Canifor Hotel

**Most Popuar Activities**

- Buggiba Walk
- Ghar Lapsi
- Gozo
- Comino
- Festa Night





Student Package

- Full board including packed lunches
- General English (20 lessons / 15 hours per week) - Closed Group
- Education materials
- End of Course Certificate
- Airport transfers arrival & departure

Leader Package

- Homestay, single room, full board including packed lunches
- Airport transfers arrival & departure

Accommodation Type

Homestay or Residential



- Transfers to/from airports outside of destination are available at a supplement.
- Lessons alternate between morning and afternoon sessions.
- Special dietary requirements may be accommodated subject to availability at a fee of £35 per week.



Bristol

Mimumum age  
13 years

Availability  
From 14.09.25 to 16.05.26

Arrival on Sunday  
Departure on Saturday

Lessons alternate between morning and afternoon sessions.

Accommodation  
Homestay twin room

- Most Popuar Activities
- SS Britain
  - Bath
  - Bristol Cathedral
  - Cardiff
  - Oxford



Brighton

Mimumum age  
13 years

Availability  
From 4.01.26 to 8.03.26

Arrival on Sunday  
Departure on Saturday

Lessons alternate between morning and afternoon sessions.

Accommodation  
Homestay twin room

- Most Popuar Activities
- Chichester Cathedral
  - Brighton Pier
  - London
  - Sea Life Centre
  - Royal Pavillon



Chessington World of Adventures

Mimumum age  
8 years

Availability  
From 14.09.25 to 16.05.26

Arrival on Sunday  
Departure on Saturday or Sunday

Lessons alternate between morning and afternoon sessions.

Accommodation  
Triple room at Chessington Park & Resort

- Most Popuar Activities
- Full day trip to London
  - Full day trip to Oxford
  - Full day trip to Cambridge
  - Full day trip to Brighton
  - Chessington Zoo



Dublin

Mimumum age  
13 years

Availability  
From 14.09.25 to 16.05.26

Arrival on Sunday  
Departure on Saturday

Lessons alternate between morning and afternoon sessions.

Accommodation  
Homestay twin room

- Most Popuar Activities
- Cliffs of Moher
  - Dublin Castle
  - Book of Kells
  - Giant's Causeway
  - Wicklow Mountains & Glendalough



# USA & Canada



### Student Package

- Homestay, twin room, full board including packed lunches
- General language (20 lessons / 15 hours per week) - Closed Group
- Education materials
- End of Course Certificate
- Airport transfers arrival & departure

### Leader Package

- Homestay, single room, full board including packed lunches
- Airport transfers arrival & departure

### Accommodation Type

Homestay



- Lessons alternate between morning and afternoon sessions.
- Special dietary requirements may be accommodated subject to availability at a fee of USD \$45 or CAD \$45 per week.
- Groups must have adequate health, accident and travel insurance while attending our programme and are required to provide evidence of this on arrival
- Our own Guard Me student insurance is available at a fee of USD \$20 or CAD \$30 per person per week
- Canada Custodianship fee of CAD \$150 applies, if requested by the Canadian Embassy.



### New York

**Minimum age**  
14 years

**Availability**  
From 14.09.25 to 16.05.26

**Arrival** on Sunday  
**Departure** on Saturday

Lessons alternate between morning and afternoon sessions.

**Accommodation**  
Homestay

### Most Popular Activities

- New York walking tour
- Empire State Building
- Statue of Liberty Tour
- Top of the Rock
- Niagara Falls



### Montreal

Both English or French lessons available.

**Minimum age**  
13 years

**Availability**  
From 14.09.25 to 16.05.26

**Arrival** on Sunday  
**Departure** on Saturday

Lessons alternate between morning and afternoon sessions.

**Accommodation**  
Homestay

### Most Popular Activities

- Ice Skating
- Barbie Museum
- Planetarium
- Botanical Gardens
- Quebec City







Student Package

- Residential, twin room, full board including packed lunches
- General English (20 lessons / 15 hours per week) - Closed Group
- Education materials
- End of Course Certificate

Leader Package

- Residential, single room, full board including packed lunches
- Airport transfers arrival & departure

Accommodation Type


Residential



- The programme applies to groups of 15 students minimum.
- For groups wishing to travel outside of the January dates prices are available on request.

Facilities at The Myriad:

- Indoor & outdoor cinemas
- Rooftop swimming pools
- Virtual reality arcade
- Basketball courts
- Laundry facilities
- On-site restaurants & cafes
- On-site 24 hour supermarket
- Fitness & sporting facilities



### Dubai

**Miminum age**  
10 years

**Availability**  
From 4.01.26 to 17.01.26

**Arrival** on Sunday  
**Departure** on Saturday

**Accommodation**  
The Myriad Dubai

**Most Popuar Activities**

- Jumeirah Mosque
- Al Fahidi
- Burj Khalifa
- Full day trip to Abu Dhabi
- Yacht Cruise

Sample Programme

The sample programme is provided for illustrative purposes only and is subject to change.

	Day 1	Day 2	Day 3	Day 4	Day 5	Day 6	Day 7	Sunday
Morning	Arrivals, settle in to accommodation. Dinner at residence. Initial welcome and induction.	Testing & Induction/Enlish Language Classes	English language classes	English language classes	English language classes	English language classes	Full day trip to Abu Dhabi with a visit to the Sheikh Zayad Grand Mosque and The Louvre Museum	Pack and check out
Afternoon		Half day excursion to the historical district of Al Fahidi	Visit to the Jumeirah Mosque and afternoon at Jumeirah Beach (bring a beach towel, swimming costume and lots of sunblock!)	Visit to the Mall of the Emirates Optional upgrade *The Snow Park* Snow classic. Bring warm clothes.	Half day excursion to the Burj Khalifa Observatory and the Dubai Fountains	Sports and Swimming at the residence Optional upgrade *The Museum of the Future*		Departure transfer to airport
Evening		Welcome to the UAE Quiz Night	Movie & Pizza Night	Evening Yacht Cruise	Sports and Swimming at the residence	Graduation Party and Farewell Fun		



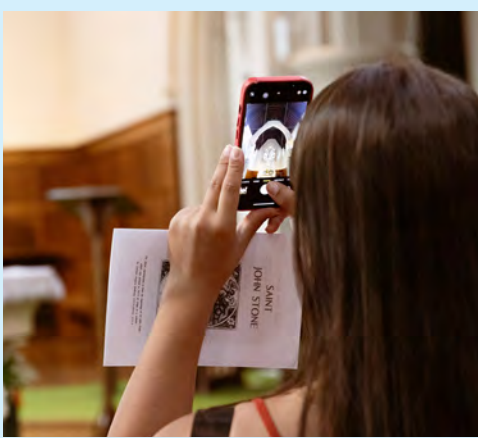




# Summer Locations

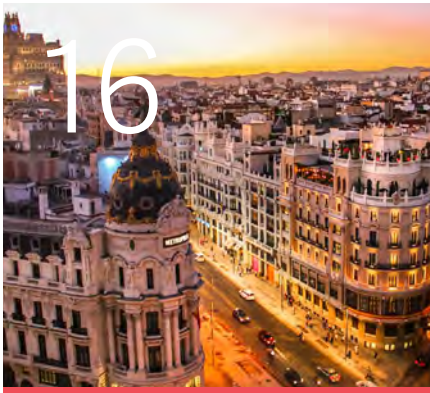
## Language, Learning & Adventures.

Embassy Summer courses are designed to ensure young language students get the most from their summer through improving their language, personal development and making new international friends.



I made many friends from different countries and, most importantly, I overcame my fear and started communicating in a foreign language. Thanks to the diverse and interactive program, I got to explore many beautiful places.

Paulina from Slovakia  
**Student at Embassy Summer in 2025**



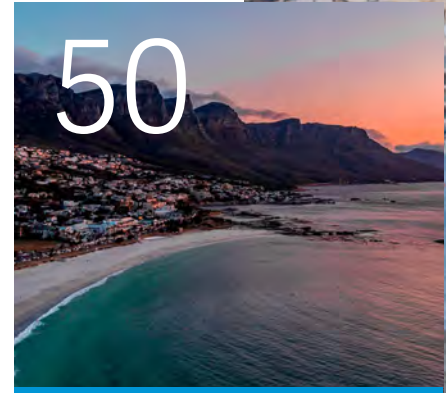
16

Spain



42

Malta



50

South Africa



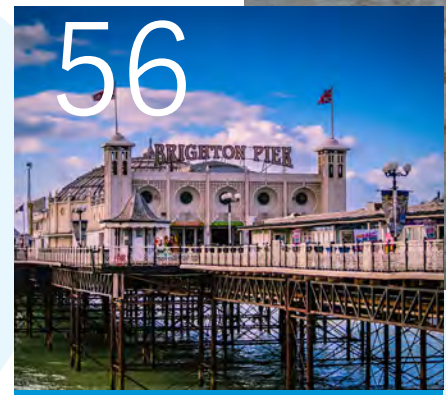
52

USA



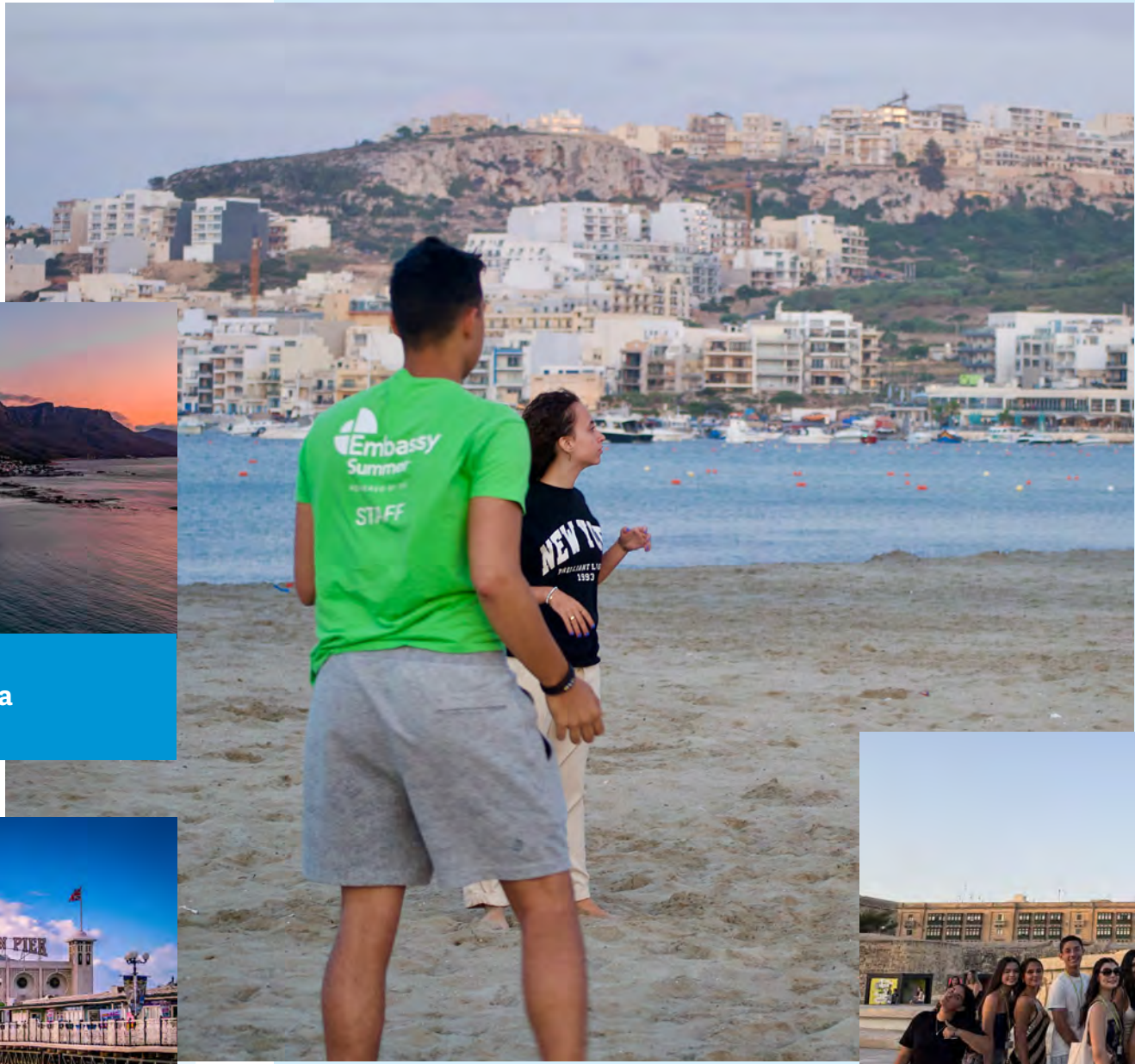
54

UAE



56

United Kingdom







# Campus Hub, Malta



## Malta

Just a short journey by private bus from our school, St Martin's College, this purpose built student residence offers a variety of room styles, all set above a piazza designed for student life. With a variety of food and shopping outlets, a swimming pool and student common areas to relax in, the Campus Hub is a fantastic option for students looking for a more campus style feel to their summer school experience.

**Age**  
12 - 17 years

**Date**  
23/06/26 - 16/08/26

## A Sample Week

The programme is for illustrative purposes only and is subject to amendments or alterations.

	Morning	Afternoon	Evening
SUN	Golden Bay		Welcome Games
MON	Lessons	Valletta & Malta Experience	UNO Party
TUE	Lessons	Shopping & Swimming	Sports Festival
WED	Lessons	Limestone Heritage & Ghar Lapsi	Beach BBQ
THUR	Lessons	Harbour Cruise	International Party
FRI	Lessons	Comino	Inhouse Games
SAT	Gozo optional trip		Mdina treasure hunt



## Accommodation

- Twin / Triple rooms
- Bathroom Ratio 1:5 students
- Cluster apartments and shared apartments
- Single bed, wardrobe, bedside table, desk, chair and AC

## Cleaning

- Accommodation is cleaned weekly
- Bed linens are provided and changed weekly
- Laundry is available on site at an additional cost



## Facilities

- Student lounge
- Communal kitchen and TV
- Swimming pool
- Dinner and breakfast on campus, lunch served at school, packed lunch at weekends



## Shops and Cafes

The Campus Hub student village offers a variety of shops and cafes, including a large supermarket.

## Towels

- Bath towels are provided and changed weekly, students should bring their own beach towel

## Wifi

- Wifi is available on campus

## Travel times from nearest airport

(MLA) Malta International Airport - 20 mins by taxi

## DAY PROGRAMME OFFERED HERE

SCUBA DIVING course available - book in advance





# Hotel Stay, Malta



## Malta

Our hotel options are located in St. Paul's Bay on the outskirts of Qawra and Bugibba which are Malta's largest seaside resort towns. The location is 17 km from the airport and only 15 km from Malta's capital city, Valletta. The coastline promenade is within walking distance from the hotels and boasts some of the islands' best open sea views.

**Age**  
12 - 17 years

**Date**  
28/06/26 - 26/07/26

## A Sample Week

The programme is for illustrative purposes only and is subject to amendments or alterations.

	Morning	Afternoon	Evening
SUN	Ghadira Bay		Welcome Games
MON	Water Park	Lessons	UNO Party
TUE	Mosta Rotunda & Mdina	Lessons	Sports Festival
WED	Fond Ghadir	Lessons	Bugibba Walk
THUR	Marsaxlokk & Blue Grotto	Lessons	International Party
FRI	Bowling	Lessons	Beach BBQ
SAT	Gozo optional trip or Sandy Beach		Valletta Night

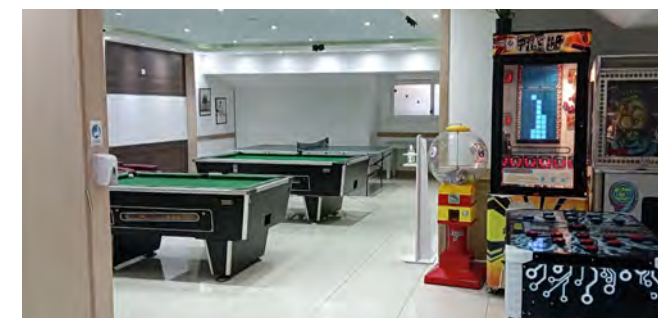


## Accommodation

- Triple/Quad en-suite rooms
- Bathroom Ratio 1:4 students
- Single beds, wardrobe, and AC

## Cleaning

- Accommodation is cleaned every other day
- Bed linens are provided and changed every three days
- Laundry is available at an extra cost



## Facilities

- Lounge area
- Games room



## Shops and Cafes

There are shops located close to each of our hotels for students to buy snacks and essentials. The programme provides plenty of opportunity for shopping for bigger items!

## Towels

- Bath towels are provided and changed weekly, students should bring their own beach towel

## Wifi

- Wifi is available on campus

## Travel times from nearest airport

(MLA) Malta International Airport - 20 mins by taxi

## DAY PROGRAMME OFFERED HERE

**SCUBA DIVING course available - book in advance**





# Mediterranean College of Sports, Malta



## Malta

The sun-kissed island of Malta is a treasure trove of beautiful beaches, crystal blue seas, and centuries of history, all topped off with that chilled out Mediterranean vibe. Malta's first all-purpose campus with combined accommodation and academic spaces; purpose-built and designed with the student at its core. MCS is Malta's only live-in campus, with all amenities on-site or within close proximity, with convenience at the forefront of its conception.

## Age

13 - 17 years

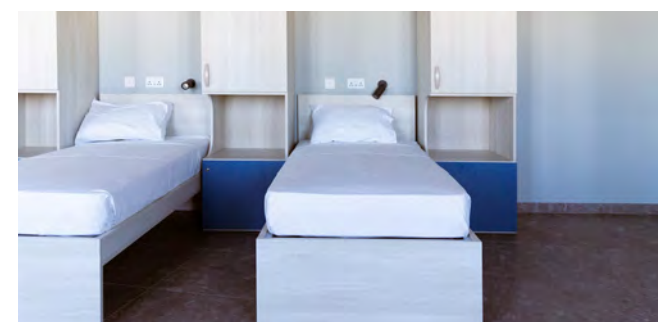
## Date

28/06/26 - 23/08/26

## A Sample Week

The programme is for illustrative purposes only and is subject to amendments or alterations.

	Morning	Afternoon	Evening
SUN	Ghajn Tuffieha		Welcome Games
MON	Lessons	Comino	UNO Party
TUE	Lessons	Esplora	Sports Festival
WED	Lessons	Birgu & Saluting Battery	Beach BBQ
THUR	Lessons	Qawra Beach & Optional Aquarium	International Party
FRI	Lessons	Bowling	Photo Challenge
SAT	Gozo optional trip or sandy beach		Mdina treasure hunt



## Accommodation

- Twin, triple or quad standard rooms
- Bathroom Ratio 1:5 students
- Single beds, desk, chair, wardrobe, air-conditioning

## Cleaning

- Bed linens are provided and changed weekly



## Facilities

- Outdoor swimming pool
- Athletics track
- Football pitch
- Multi-sport pavilion
- Gymnastics hall
- Breakfast, lunch, and dinner served on campus, packed lunch at weekends



## Towels

- Bath towels are provided and changed weekly, students should bring their own beach towel

## Wifi

- Wifi is available on campus

## Travel times from nearest airport

(MLA) Malta International Airport - 20 mins by taxi

**SCUBA DIVING course available - book in advance**





# Home Stay, Malta



## Malta

The sun-kissed island of Malta is a treasure trove of beautiful beaches, crystal blue seas, and centuries of history, all topped off with that chilled out Mediterranean vibe.

**Age**  
12 - 18 years

**Date**  
21/06/26 - 23/08/26

## A Sample Week

The programme is for illustrative purposes only and is subject to amendments or alterations.

	Morning	Afternoon	Evening
SUN	Ghajn Tuffieha		Welcome Games
MON	Lessons	Comino	UNO Party
TUE	Lessons	Esplora	Sports Festival
WED	Lessons	Birgu & Saluting Battery	Beach BBQ
THUR	Lessons	Qawra Beach & Optional Aquarium	International Party
FRI	Lessons	Bowling	Photo Challenge
SAT	Gozo optional trip or sandy beach		Mdina treasure hunt



## Accommodation

- Twin, triple or quad standard rooms
- Bathroom Ratio 1:6 students
- Single bed, bedside table
- There are shared common spaces with the host family
- Dinner and breakfast with family, lunch served at school, packed lunch at weekends

## Cleaning

- Bedrooms are cleaned once a week
- Bed linens are provided and changed weekly
- Laundry is done once per week



## Towels

- Bath towels are provided and changed weekly, students should bring their own beach towel

## Wifi

- Wifi is available on campus

## Travel times from nearest airport

(MLA) Malta International Airport - 20 mins by taxi

**SCUBA DIVING course available - book in advance**



# EC Cape Town, South Africa



## Cape Town, South Africa

Cape Town is one of the world's top tourist destinations, offering a wide variety of natural beauty, cultural highlights and historical significance. As a former British colony, English is the main spoken language of communication. EC Cape Town is located in the business district of the Cape Town city centre and is only a 5-minute walk to the Waterfront district, the most visited tourist attraction in South Africa. Students are housed in a hotel which is a short 7-minute walk to the school.

### Age

12–17

(18 year olds accepted as part of a group with a leader)

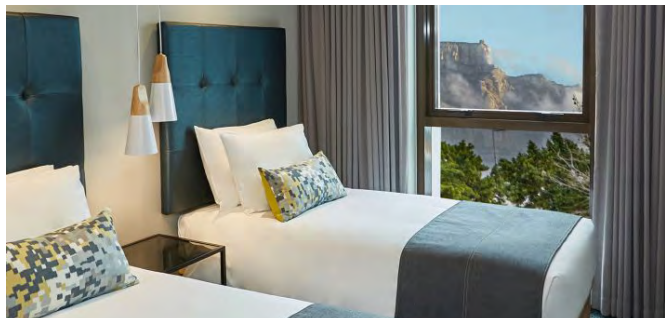
### Date

28/06/26 - 02/08/26

## A Sample Week

The programme is for illustrative purposes only and is subject to amendments or alterations.

	Morning	Afternoon	Evening
SUN	Arrivals/on-site activities		Welcome Games
MON	Testing/Induction	Walking Bo Kaap Tour	Trashion Show Bowling
TUE	Lessons	Roller Skating	The Great Egg Drop
WED	Lessons	South Africa History Museum	Evening visit
THUR	Lessons	Sports afternoon	Quiz Night
FRI	Lessons	Half Day Trip: Ostrich Farm	Disco
SAT	Full day trip: Cape of Good Hope Nature Reserve including Boulders Beach		Film Night / Quiz



### Accommodation

- Students accommodated at StayEasy Cape Town City Bowl hotel
- Hotel en-suite twin room
- Bathroom Ratio 1:2 students
- Two single beds, desk, chair, wardrobe, bed linens

### Cleaning

- Accomodation is cleaned weekly
- Linen cleaning is done weekly
- Launderette is available within walking distancefrom the hotel at an additional cost



### Facilities

- Our programme offers a variety of sporting activities for students whilst with us that are pre-booked locally.



### Shops and Cafes

Our school and residence are in the heart of the city with plenty of shops and cafes nearby.

### Towels

- Bath towels provided.

### Wifi

- Wi-Fi is accessible throughout the accommodation.





# Tufts University, Boston

ENGLISH  
US A



## Boston

The Embassy Summer centre in Boston is located on the beautiful campus of the prestigious Tufts University in Medford, Massachusetts, only 20 minutes to the historic city centre, and moments away from Cambridge. The campus has fantastic facilities including a modern sports hall, indoor swimming pool and running track with a recreational field and outdoor space as well as spacious residence halls.

### Age

13–18

(18 year olds accepted as part of a group with a leader)

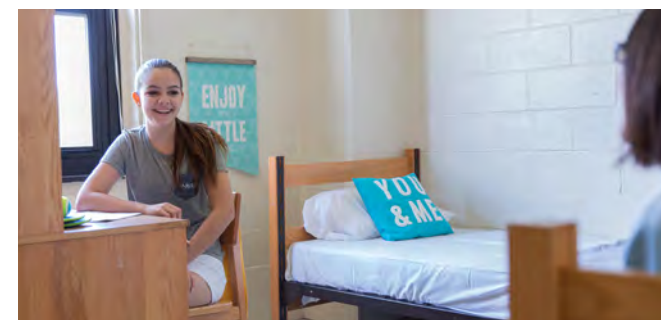
### Date

28/06/26 - 02/08/26

## A Sample Week

The programme is for illustrative purposes only and is subject to amendments or alterations.

	Morning	Afternoon	Evening
SUN	Arrivals/On-site activities	Boston Shopping or Newport Cliffwalks	Welcome Party Getting to know you
MON	Testing/induction	Davis Square with Scavenger Hunt	Ice Cream Social Jeopardy Game Night
TUE	Lessons	Exploring the Freedom Trail	Tye Dye Tee Shirts or Night at the Gym
WED	Lessons	Visit to Harvard University & Cambridge Commons	Sports or Paint Night
THUR	Lessons	Visit to Faneuil Hall & Quincy Market	Downtown Crossing & Chinatown History
FRI	Lessons	Trip to Sports Museum	Dance Party with Karaoke
SAT	Charles River Walk & Museum of Science		Casino Night



## Accommodation

- Twin standard rooms
- Bathroom Ratio 1:6 students
- Traditional US college dormitory rooms
- Single bed, wardrobe, desk, chair and AC
- Common room

## Cleaning

- Students must clean their own rooms
- Bathrooms and common areas are cleaned daily
- Linen cleaning is done weekly
- Laundry is available on residence, small fee



## Facilities

- Baseball field
- Basketball and tennis courts
- Indoor swimming pool
- Gym available twice a week
- Outdoor areas for games and activities

## Shops and Cafes

There is a shop on campus, as well as small cafe for students' use

## Towels

- Provided

## Wifi

- Wifi is available on campus

## Travel times from nearest airport

(BOS) Logan International Airport 30 mins

## DAY PROGRAMME OFFERED HERE







### Dubai

Dubai is one of the safest cities in the world and an international hub, making it a perfect place for an international summer school. Our summer camp in Dubai is located on the modern campus of EC Dubai, located in Knowledge Park, a hub of education and international students.

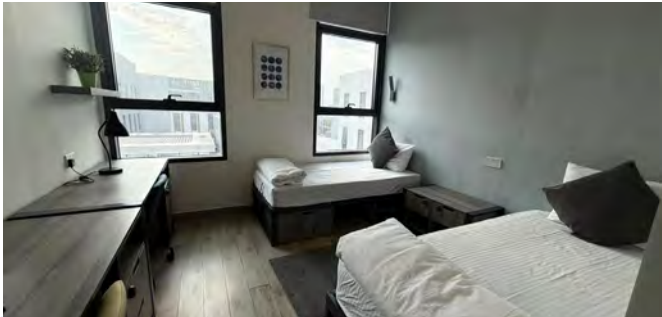
**Age**  
12–17  
(18 year olds accepted as part of a group with a leader)

**Date**  
On request

### A Sample Week

The programme is for illustrative purposes only and is subject to amendments or alterations.

	Morning	Afternoon	Evening
SUN	Arrivals/on-site activities		Welcome Games
MON	Testing/Induction	Visit to the Burj Khalifa	Trashion Show
TUE	Lessons	Swimming / Football	The Great Egg Drop
WED	Lessons	Visit to The Dubai Fountain	Evening visit
THUR	Lessons	Sports afternoon	Quiz Night
FRI	Lessons	Visit to Dubai Marina and the Marina Mall	Disco
SAT	Full day trip – Red Dunes Desert Safari		Film Night / Quiz



### Accommodation

- Single and Twin en suite rooms
- Bathroom Ratio 1:1/ 1:2 students
- Flats of 5-9 with communal kitchen
- Single bed, wardrobe, desk, chair

### Cleaning

- Accomodation is cleaned weekly
- Linen cleaning is done weekly
- Laundry available at the residence, small fee



### Facilities

- Indoor sports halls
- Swimming pools
- Football pitch
- Tennis courts
- Dance studio
- Outdoor areas



### Shops and Cafes

Mini supermarket and cafes are available at the residence and students will have plenty of shopping opportunities during their stay with us in the many world class shopping malls in the UAE.

### Towels

- Students bring their own towels

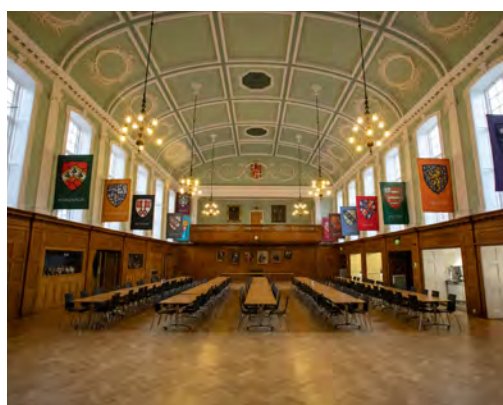
### Wifi

- Wifi is available on campus





# Wellington College, Berkshire



## Berkshire

Historic and traditional, a truly British experience. This famous and highly respected boarding school provides a world-leading educational environment, and a wealth of first class facilities, all set within an inspirational campus.

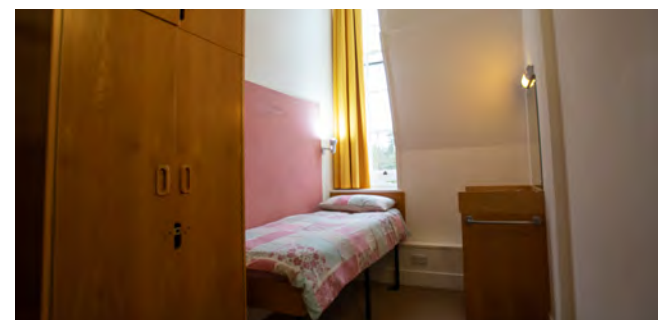
**Age**  
10-17

**Date**  
30/06/26 - 11/08/26

## A Sample Week

The programme is for illustrative purposes only and is subject to amendments or alterations.

	Morning	Afternoon	Evening
TUE	Arrivals / On-site sports and activities Optional trip to Cambridge with walking tour and college visit		Welcome Games On-site Activities
WED	Testing/Induction	On-site sports and activities, Crowthorne village walk	Karaoke Optional Cinema / Bowling
THUR	Lessons	Half-day trip to Reading and Reading Museum	Talent show
FRI	Lessons	Mini-Olympics	Culture Club Egg Drop
SAT	Lessons	Half-day trip to Windsor and Windsor Castle	Treasure Hunt
SUN	Lessons	Arts and Crafts On-site sports and activities	Disco
MON	Full-day trip to London with walking tour and visit to the National Gallery		Film night Local walk



## Accommodation

- Single / twin / triple / quad standard rooms
- Bathroom ratio 1:5 students
- Students are housed in traditional British boarding houses, separated by gender
- Single bed, wardrobe, desk, chair

## Cleaning

- Accommodation is cleaned weekly
- Linen cleaning is done weekly
- There are laundry facilities available at the residence.



## Facilities

- Indoor swimming pool
- Tennis courts
- Extensive playing fields
- Cricket nets



## Towels

- Students bring their own towels

## Wifi

- Wifi is available on campus

## Travel times from nearest airport

- (LGW) London Gatwick Airport 1 hr 30 mins
- (LHR) London Heathrow Airport 45 mins
- (STN) Stansted Airport 2 hrs
- (LTN) Luton Airport 1 hr 30 mins





# University of Sussex, Brighton



## Brighton

Known as 'London by the sea', Brighton is a multi-cultural city full of great beaches, hip cafes and trendy shops. Our centre is located on the campus of the well-known University of Sussex in Falmer, only a short bus or train journey from the city centre.

## Age

13–17 Individuals

(12–18 year olds accepted as part of a group with a leader)

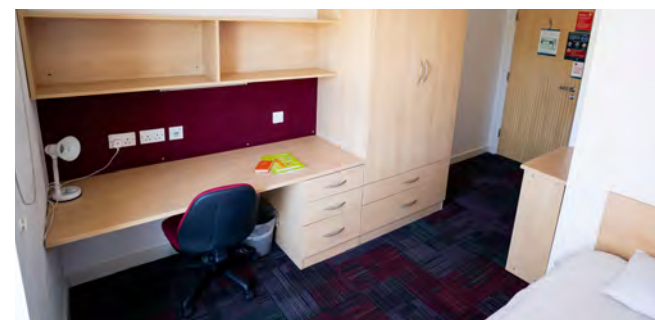
## Date

30/06/26 - 18/08/26

## A Sample Week

The programme is for illustrative purposes only and is subject to amendments or alterations.

	Morning	Afternoon	Evening
TUE	Arrivals/ Departures / On-site Activities / Optional trip to Portsmouth, Portsmouth Historic Dockyards		Welcome Games On-site Activities
WED	Testing/Induction	Half-day trip: Brighton with walking tour	Karaoke / Optional Cinema / Bowling
THUR	Lessons	Half-day trip: Arundel Castle	Photo Scavenger Hunt Brighton Bingo
FRI	Lessons	On-site Sports	Brighton Fashion Show
SAT	Lessons	Half-day trip: Lewes by train	Nature Walk Lip Dub Presentation
SUN	Lessons	Capture the flag or Drama	Disco Kahoot Quiz
MON	Full-day trip: London with Westminster walking tour and National Gallery visit		Film Night



## Accommodation

- Single room with en-suite
- Bathroom ratio 1:1 students
- Flats of 5-9 with communal kitchen
- Single bed, wardrobe, desk, chair

## Cleaning

- Accommodation is cleaned weekly
- Linen cleaning is done weekly
- Laundry facilities available on campus, small fee



## Facilities

- Indoor sports hall
- Outdoor areas
- Breakfast, lunch and dinner are on campus. Packed lunches are provided for full day trips



## Shops and Cafes

Mini supermarket and cafes are available on campus.

## Towels

- Students bring their own towels

## Wifi

- Wifi is available on campus

## Travel times from nearest airport

- (LGW) London Gatwick Airport 45 mins
- (LHR) London Heathrow Airport 1 hr 30 mins
- (STN) Stansted Airport 2 hrs
- (LTN) Luton Airport 2 hrs 15 mins





# Abbey College, Cambridge



## Cambridge

Explore the academic excellence of Cambridge, a timeless haven for aspiring scholars. With its prestigious university settings and serene environment, Cambridge offers a unique opportunity to immerse yourself in a world of learning and discovery.

### Age

12–18  
(18 year olds accepted as part of a group with a leader)

### Date

28/06/26 - 16/08/26

## A Sample Week

The programme is for illustrative purposes only and is subject to amendments or alterations.

	Morning	Afternoon	Evening
SUN	Arrivals / Departures On-site Activities/ Optional Trip to Brighton		Welcome Games On-site Activities
MON	Testing/Induction	Walking Tour of Cambridge	Karaoke / Optional Cinema / Bowling
TUE	Lessons	Indoor Sports Arts and Crafts	Kahoot Quiz Night
WED	Lessons	Half-day trip: King's College	Talent show
THUR	Lessons	Mini Olympics	Disco Night
FRI	Lessons	Cambridge Round Church	Big Game Bingo
SAT	Full-day trip: London with Westminster Walking Tour & Covent Garden		Film Night



## Accommodation

- Single room with en-suite
- Bathroom ratio 1:1 students
- Some of our accommodation is laid out in flats with a small common area. Other rooms are in the main school building with en suite rooms along the corridors and a larger communal common room
- Students accommodated in our flat style rooms have a short 5 minute walk to the classrooms

## Cleaning

- Accommodation is cleaned weekly
- Linen cleaning is done weekly
- Laundry facilities available on campus, small fee



## Facilities

- Abbey College sports hall
- Basketball court



## Shops and Cafes

There are several supermarket style shops close to the campus.

## Towels

- Students bring their own towels

## Wifi

- Wifi is available on campus

## Travel times from nearest airport

- (LGW) London Gatwick Airport 2 hrs
- (LHR) London Heathrow Airport 2 hrs
- (STN) Stansted Airport 1 hr
- (LTN) Luton Airport 1 hr 30 mins

## DAY PROGRAMME OFFERED HERE





# University of Kent, Canterbury



## Canterbury

Discover Canterbury, a historic city in Kent, boasting medieval streets, a renowned Cathedral, and UNESCO World Heritage status. Our centre sits on the University of Kent's large campus, close to the city centre, offering superb sports facilities and expansive outdoor spaces for added activities.

### Age

12–18  
(18 year olds accepted as  
part of a group with a leader)

### Date

23/06/26 - 18/08/26

## A Sample Week

The programme is for illustrative purposes only and is subject to amendments or alterations.

	Morning	Afternoon	Evening
TUE	Arrivals / Departures On-site Activities/ Optional Trip to Hastings		Welcome Games On-site Activities
WED	Testing/Induction	Canterbury City, Canterbury Cathedral	Marshmallow Challenge
THUR	Lessons	Half-day trip: Whitstable Town	Photo Scavenger Hunt
FRI	Lessons	On-site Sports	Karaoke
SAT	Lessons	Half-day trip: Chatham Dockyards	Multi Sports
SUN	Lessons	Mini Olympics	Disco
MON	Full day trip: Cambridge with walking tour or London with Westminster walking tour		Film Night

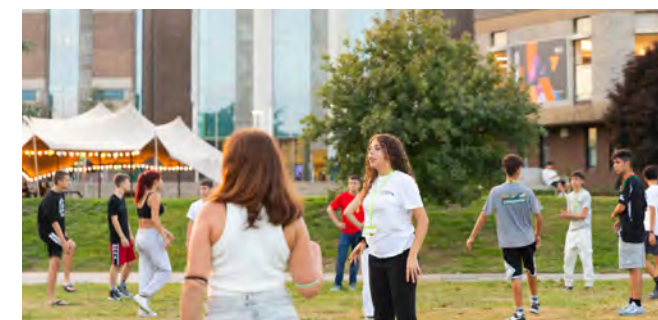


## Accommodation

- Single room with en-suite & standard rooms
- Bathroom ratio 1:1 (en-suite) & 1:5 (standard)
- Flats of 5 rooms
- Single bed, wardrobe, desk, chair

## Cleaning

- Accommodation is cleaned weekly
- Linen cleaning is done weekly
- Laundry facilities available on campus, small fee



## Facilities

- Outdoor space
- Indoor sports hall
- Breakfast, lunch and dinner are on campus. Packed lunches are provided for full day trips.



## Shops and Cafes

Convenience shop located on campus

## Towels

- Students bring their own towels

## Wifi

- Wifi is available on campus

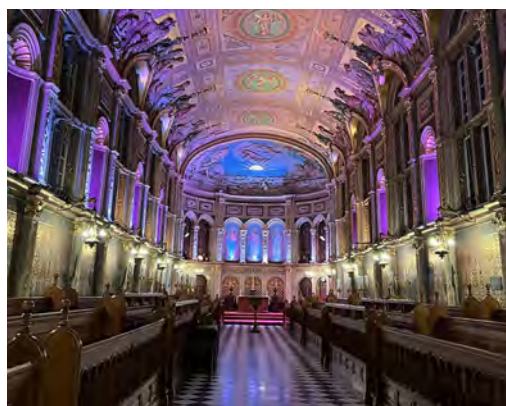
## Travel times from nearest airport

- (LGW) London Gatwick Airport 1 hr 30 mins
- (LHR) London Heathrow Airport 2 hrs
- (STN) Stansted Airport 1 hr 45 mins
- (LTN) Luton Airport 2 hrs 15 mins





# Royal Holloway University of London, Egham



## Egham

The gorgeous campus of Royal Holloway University of London with its fabulous Harry Potter style 'Founders' Building is a truly wonderful location for a summer school. The large and modern campus has its own supermarket, cafes, sports centre and lots of space to explore and relax!

### Age

10–18

(18 year olds accepted as part of a group with a leader)

### Date

23/06/26 - 18/08/26

## A Sample Week

The programme is for illustrative purposes only and is subject to amendments or alterations.

	Morning	Afternoon	Evening
SUN	Arrivals/Departures		Welcome Games On-Site Activities
MON	Testing/Induction	Walk to Egham Town On-site Sports	Photo Scavenger Hunt / Team Games
TUE	Lessons		Welcome Disco
WED	Full-day trip: London with Westminster walking tour and visit to the National Gallery		Culture Club Arts and Crafts, Optional Cinema
THUR	Lessons	Half-day trip: Reading and Shopping	Egg Drop / Make your own movie
FRI	Lessons	Mini Olympics	Themed Disco
SAT	Full-day trip: Oxford with Walking Tour and College Visit		Film Night Board Games



## Accommodation

- Single en-suite rooms
- Bathroom ratio 1:1 students
- Students are accommodated in flats with a shared common space
- Single bed, wardrobe, desk, chair

## Cleaning

- Rooms cleaned weekly
- Common rooms and bathrooms daily
- Linen cleaning is done weekly
- Laundry facilities available on campus, small fee



## Facilities

- Outdoor sports field
- Tennis courts
- Indoor sports hall
- Outdoor basketball courts
- Breakfast, lunch and dinner are on campus. Packed lunches are provided for full day trips

## Shops and Cafes

On-site supermarket and Starbucks are located on campus.

## Towels

- Students bring their own towels

## Wifi

- Wifi is available on campus

## Travel times from nearest airport

- (LGW) London Gatwick Airport 1 hr 45 mins
- (LHR) London Heathrow Airport 45 mins
- (STN) Stansted Airport 2 hr 15 mins
- (LTN) Luton Airport 1 hr 45 mins
- (LCY) London City 1 hr 45 mins
- Kings Cross St Pancras 1 hr 45 mins







# University of East London, London Docklands



## Docklands

Our centre is located at the Docklands Campus of the University of East London, which is located next to the River Thames opposite London City Airport. From the modern residence buildings students will get a great view of London's iconic skyline and easy access to central London when you want to explore the city.

## Age

11–18

(18 year olds accepted as part of a group with a leader)

## Date

16/06/26 - 18/08/26

## A Sample Week

The programme is for illustrative purposes only and is subject to amendments or alterations.

	Morning	Afternoon	Evening
TUE	Arrivals / Departures, Sports / Local Activities, Optional trip to Hampton Court Palace		Welcome Games On-site Activities
WED	Testing/Induction	Westminster or London Walking Tour	Disco / Optional cable car experience
THUR	Lessons	London British Museum	The Great Egg Drop! Optional Musical
FRI	Lessons	St Paul's Cathedral	Karaoke / Optional Cinema / Bowling
SAT	Lessons	Covent Garden Shopping	Dodgeball Tournament
SUN	Lessons	Greenwich and Maritime Museum	Trashion Show
MON	Cambridge with walking tour or Canterbury with walking tour		Film Night



## Accommodation

- Single room with en-suite & standard rooms
- Bathroom ratio 1:1 students
- Flats of 4-6 rooms with communal kitchen
- Single bed, wardrobe, desk, chair

## Cleaning

- Accommodation is cleaned weekly
- Linen cleaning is done weekly
- Laundry facilities available on campus, small fee



## Facilities

- Astro turf pitch
- Indoor sports hall
- Outdoor basketball court



## Towels

- Students bring their own towels

## Wifi

- Wifi is available on campus

## Travel times from nearest airport

- (LGW) London Gatwick Airport 1 hr 45 mins
- (LHR) London Heathrow Airport 1 hr 45 mins
- (STN) Stansted Airport 2 hrs
- (LTN) Luton Airport 2 hrs





# Queen Mary, University of London, London Mile End



## Mile End, London

Our centre is located on the modern city campus of Queen Mary University of London, just a short journey on the tube from central London in zone 2. Students stay in the halls of residence in the student village, which has both shops and a sports hall which they use during their programme.

### Age

12–18

(18 year olds accepted as part of a group with a leader)

### Date

23/06/26 - 18/08/26

## A Sample Week

The programme is for illustrative purposes only and is subject to amendments or alterations.

	Morning	Afternoon	Evening
SUN	Arrivals/Departures, Local Activities, Optional trip to Thorpe Park		Welcome Games Local Walk
MON	Testing/Induction	Westminster or London Walking Tour	Indoor Sports or Treasure Hunt or egg drop
TUE	Lessons	Optional trip to Madame Tussauds	Karaoke Optional Musical
WED	Lessons	St Paul's Cathedral	Karaoke / Optional Cinema / Bowling
THUR	Lessons	London British Museum Optional London Dungeons	Disco
FRI	Lessons	Tate Modern	Trashion Show
SAT	Cambridge with walking tour or Canterbury with walking tour		Film Night



## Accommodation

- Single room with en-suite
- Bathroom ratio 1:1 students
- Flats of 5-9 with communal kitchen
- Single bed, wardrobe, desk, chair

## Cleaning

- Accommodation is cleaned weekly
- Linen cleaning is done weekly
- Laundry facilities available on campus, small fee



## Facilities

- Outdoor space
- Basketball court
- Indoor sports hall



## Towels

- Students bring their own towels

## Wifi

- Wifi is available on campus

## Travel times from nearest airport

- (LGW) London Gatwick Airport 1 hr 30 mins
- (LHR) London Heathrow Airport 1 hr 45 mins
- (STN) Stansted Airport 1 hr 15 mins
- (LTN) Luton Airport 1 hr 45 mins





# London South Bank University, London Southbank



## Southbank, London

Our centre is located on the campus of London South Bank University (LSBU), only a short walk from attractions such as the London Eye and the London Dungeon. The location could not be more central! Students stay at McLaren House just a couple of minutes from the main university building.

### Age

13–17 Individuals

18-21 Adults

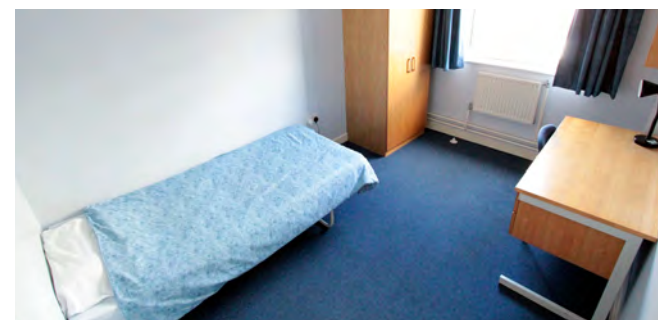
### Date

21/06/26 - 16/08/26

## A Sample Week

The programme is for illustrative purposes only and is subject to amendments or alterations.

	Morning	Afternoon	Evening
SUN	Arrivals/Departures, Local Activities or trip to Windsor and Windsor Castle		Sports in Park Welcome Games
MON	Testing/Induction	Westminster or other London walking tour	Disco
TUE	Lessons	National Portrait Gallery	Quiz, Optional Cinema / Bowling
WED	Lessons	Local Activities	Karaoke Optional Musical
THUR	Lessons	Tower Bridge Experience	Shopping at Westfield or Oxford Street, Film Night
FRI	Lessons	Museum of London or MadameTussauds	Disco
SAT	Cambridge with walking tour or Canterbury with walking tour and visit to the cathedral		London-by-Night Walk Talent Show



## Accommodation

- Single room with en-suite
- Bathroom ratio 1:1 students
- Arranged in flats of 5, 8 & 10 with communal kitchen
- Single bed, wardrobe, desk, chair

## Cleaning

- Accommodation is cleaned weekly
- Linen cleaning is done weekly
- Laundry facilities available on campus, small fee



## Facilities

- Indoor sports hall (when available)
- Local parks for outdoor sports
- Breakfast, lunch and dinner are on campus. Packed lunches are provided for full day trips



## Shops and Cafes

Café available in the teaching area. There are several shops (including a supermarket) within 5 minutes walking distance of the campus.

## Towels

- Students bring their own towels

## Wifi

- Wifi is available on campus

## Travel times from nearest airport

- (LGW) London Gatwick Airport 2 hrs
- (LHR) London Heathrow Airport 1 hr 45 mins
- (STN) Stansted Airport 1 hr 30 mins
- (LTN) Luton Airport 1 hr 45 mins

## DAY PROGRAMME OFFERED HERE





# University College London, London Stratford



## Stratford, London

Located on the 2012 London Olympic Park this beautiful campus boasts fantastic views over the London Stadium (now home to West Ham United), the Olympic Swimming Pool and Canary Wharf. The centre is a 10 minute walk from Westfields Shopping centre and 20 minutes by tube in to central London.

### Age

12–18  
(18 year olds accepted as part of a group with a leader)

### Date

28/06/26 - 16/08/26

## A Sample Week

The programme is for illustrative purposes only and is subject to amendments or alterations.

	Morning	Afternoon	Evening
SUN	Arrivals/Departures, Local Activities or Optional trip to Thorpe Park		Welcome Games Local Walk
MON	Testing/Induction	Westminster or other London walking tour	Karaoke
TUE	Lessons	London British Museum	Treasure hunt or Egg drop, Optional Musical
WED	Lessons	Tate Modern	Disco
THUR	Lessons	Visit to St. Paul's Cathedral	Shopping at Westfield Optional Cable car experience
FRI	Lessons	Local Walk or Madame Tussauds, Tower of London, London Dungeon	Trashion Show Optional Cinema/Bowling
SAT	Full-day trip: Brighton with walking tour and visit to Sea life Centre or Cambridge walking tour and college visit		Film Night Quiz



## Accommodation

- Single room with en-suite
- Bathroom ratio 1:1 students
- Arranged in flats of 9 with communal kitchen and lounge area
- Single bed, wardrobe, desk, chair

## Cleaning

- Accommodation is cleaned twice weekly
- Bed linen is changed weekly
- Laundry facilities available on campus, small fee



## Facilities

- Indoor sports hall
- Access to an Olympic swimming pool
- Access to outdoor space for onsite activities
- Breakfast, lunch and dinner are taken in the modern student dining hall on site. On full day trips students are provided with a packed lunch

## Shops and Cafes

There is a small cafe on site. Westfields shopping centre is a 10 minute walk away.

## Towels

- Students bring their own towels

## Wifi

- Wifi is available on campus

## Travel times from nearest airport

- (LGW) London Gatwick Airport 2 hrs
- (LHR) London Heathrow Airport 2 hrs
- (STN) Stansted Airport 1 hr 45 mins
- (LTN) Luton Airport 1 hr 45 mins
- Kings Cross St Pancras 1 hr







# Oxford Brookes University, Oxford



## Oxford

Our centre is located on the Headington campus in Oxford Brookes University, within walking distance from the city centre and with plenty of outdoor space. Known for its universities, museums and architecture, Oxford promises a superior language learning environment, with great on-site campus facilities such as a sports hall, modern dining hall and several shops.

### Age

12-18\*

(\*18 year olds accepted as part of group with leader. Individuals 13-17)

### Date

28/06/26 - 16/08/26

## A Sample Week

The programme is for illustrative purposes only and is subject to amendments or alterations.

	Morning	Afternoon	Evening
SUN	Arrivals/ Departures On-site Activities		Kahoot Quiz
MON	Testing/Induction	Oxford Walking tour Optional Trip to Bicester village	Welcome Disco
TUE	Lessons	Indoor Sports Arts and Crafts	Trashion Show
WED	Lessons	Half-day trip: Oxford Museum or College	Culture Club / Optional Cinema
THUR	Lessons	Half-day trip: Bourton on the Water & Model Village	Indoor Sports Arts and Crafts
FRI	Lessons	Indoor Sports Fantasy Literature Walking Tour	Photo Scavenger Hunt
SAT	Full-day trip: Windsor and Windsor Castle		Film Night



## Accommodation

- Single room with en-suite and standard rooms
- Bathroom ratio 1:1 / 1:5 students
- Flats of 5 rooms with a common area
- Single bed, wardrobe, desk, chair
- Our residences are both approximately a 15 minute walk from the learning area

## Cleaning

- Accommodation is cleaned weekly
- Linen cleaning is done weekly
- Laundry facilities available in residence at a small fee



## Facilities

- Indoor sports hall
- Communal green areas
- Playing fields
- Tennis and basketball courts
- Breakfast, lunch and dinner are on campus. Packed lunches are provided for full day trips.

## Shops and Cafes

There is an on-site supermarket and variety of cafés

## Towels

- Students bring their own towels

## Wifi

- Wifi is available on campus

## Travel times from nearest airport

- (LGW) London Gatwick Airport 2 hrs 15 mins
- (LHR) London Heathrow Airport 1 hr 45 mins
- (STN) Stansted Airport 2 hrs 30 mins
- (LTN) Luton Airport 1 hr 45 mins

## DAY PROGRAMME OFFERED HERE







# University of Newcastle, Newcastle-Upon-Tyne



## Newcastle

Our centre is set within a vibrant, modern facility that caters to international learners seeking an enriching summer experience. Positioned in the heart of Newcastle, known for its lively culture, historic landmarks, and friendly atmosphere, the centre provides the perfect blend of academic focus and recreational activities. With state-of-the-art classrooms, comfortable social spaces, and access to local attractions, students will enjoy a well-rounded programme designed to inspire learning and foster new friendships.

### Age

12 - 18 years

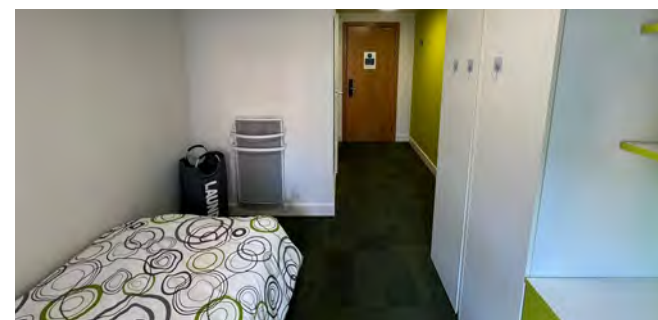
### Date

30/06/26 - 11/08/26

## A Sample Week

The programme is for illustrative purposes only and is subject to amendments or alterations.

	Morning	Afternoon	Evening
SUN	Arrivals/Departures		Welcome Games
MON	Testing/Induction	The Tyne Traveler Walking Tour, Optional Trip: Newcastle Castle	Arts & crafts
TUE	Lessons	Discover Museum	Photo Scavenger Hunt
WED	Lessons	Half Day Trip: Hexham and Hexham Abbey	Karaoke / Optional Cinema or Bowling
THUR	Lessons	Visit to Grainger Market	Talent Show
FRI	Lessons	Baltic Centre Contemporary Art	Disco
SAT	Full Day Trip: York and York Minister		Film Night



## Accommodation

- Single en-suite rooms arranged in flats containing 5 to 6 rooms
- Communal space in each flat
- Room furniture includes a wardrobe, desk and chair

## Cleaning

- Rooms and communal areas are cleaned once a week.
- There is a self-service launderette at the accommodation.
- Bed linens are changed once per week.



## Facilities

- Sports Hall
- Disco Space
- Park close by for sports



## Shops and Cafes

Plenty of shops and cafes are located close to the campus.

## Towels

- Students bring their own towels

## Wifi

- Wifi is available on campus



# TOMORROW'S LEADERS

All start with a remarkable journey

Discover new horizons and  
prepare for a brighter future with  
Global Achievers Academy.

 [globalachieversacademy.com](https://globalachieversacademy.com)







Embassy Summer forms part of EC English Holdings Ltd.

**[embassysummer.com](http://embassysummer.com)**  
**[ecenglish.com](http://ecenglish.com)**